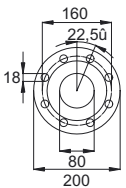
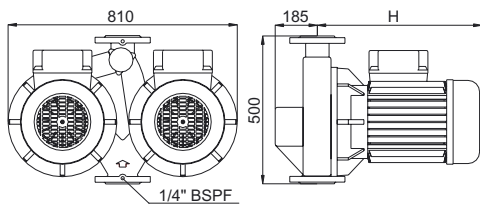
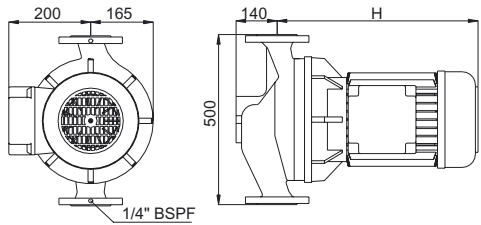


Omega™

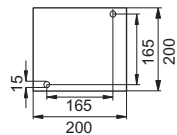
Glanded pumps.
Tørløber pumper.
Trockenläufer Pumpen.

In-line DN 80

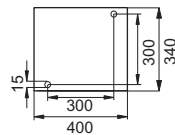
Omega 8-250-4 (D)



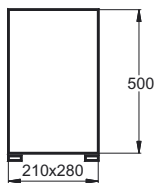
PN 10/16
DIN 2533



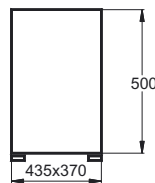
Foot: Single model



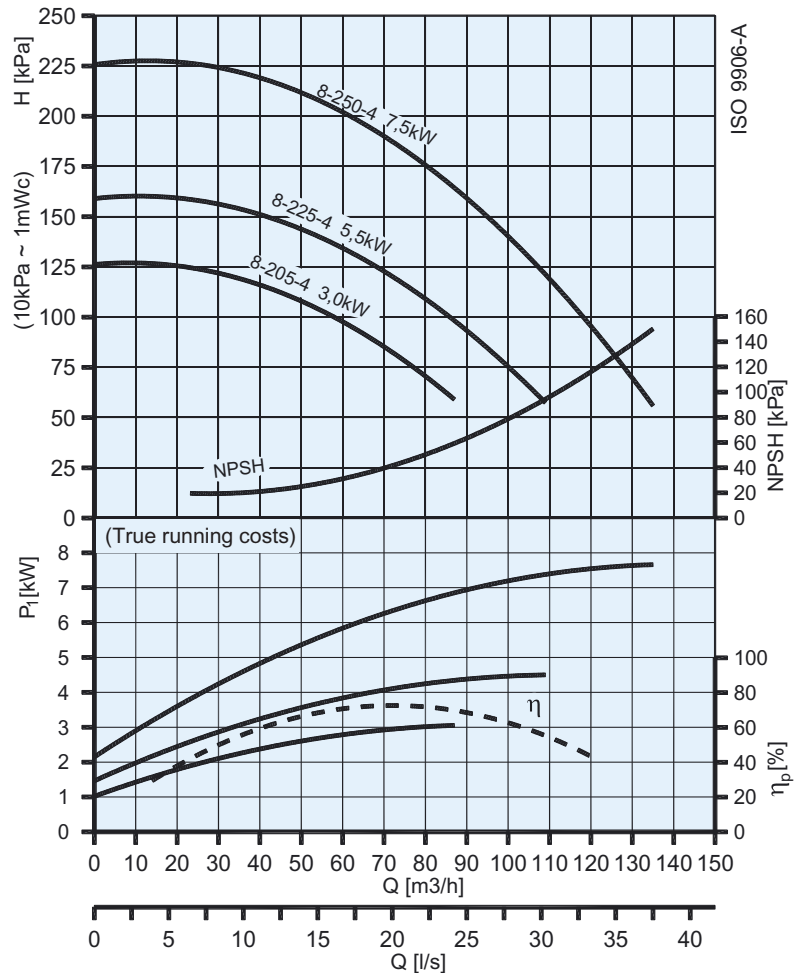
Foot: Twin model



Pedestal 76 kg.
(incl. concrete)



Pedestal 200 kg.
(incl. concrete)



P₁:
True running costs
Optagen effekt
Leistungsaufname

$$P_3 = Q \times H = \eta_p \times P_2$$

$$P_2 = \eta_m \times P_1$$

Power(kW)	3,0	5,5	7,5	
H	Single	410	550	570
	Twin	410	550	570

Type.	Kg		Motor P ₂ (kW)	I _n (A) (50Hz) standard			Cos φ	n(min ⁻¹)	dB(A)	η _m (%) standard.		
	Single	Twin		1x230V	3x400/230V	3x690/400V				eff 1	eff 2	eff 3
Omega 8-205-4 (D)	69	139	3,0	-	6,6/11,5	-	0,90	1440	60	90,1	-	85,5
Omega 8-225-4 (D)	109	221	5,5	-	-	6,6/11,5	0,84	1440	58	89,2	-	83
Omega 8-250-4 (D)	111	225	7,5	-	-	8,9/15,5	0,84	1440	52	87,4	-	78,5

D = Twin pump

IEC 38 +/- 10%, 50 Hz, IP 55

This model is also available as an Omega-Drive - a selfregulating pump with integral inverter and optional differential pressure transducer. Denne model fås også som Omega-Drive - en selvregulerende pumpe med integreret frekvensomformer med eller uden monteret differensstryk-transmitter. Dieses Model ist auch als Omega-Drive lieferbar - eine selbstregulierende Pumpe mit integriertem Umrichter, mit montiertem oder ohne Differenzdruckschalter.

Smedegaard reserve the right to change the product without prior notice and take no responsibility for inaccuracies or misprints.