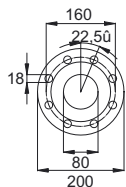
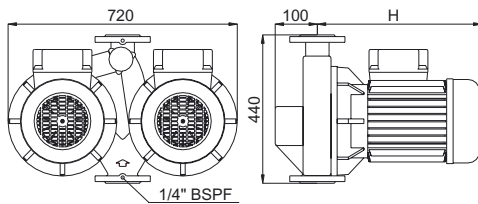
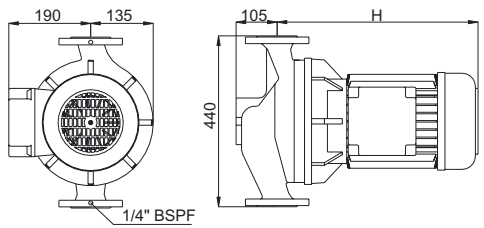


Omega™

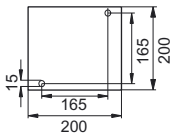
Glanded pumps.
Tørløber pumper.
Trockenläufer Pumpen.

In-line DN 80

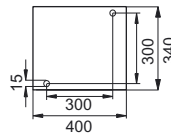
Omega 8-200-4 (D)



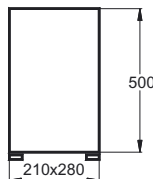
PN 10/16
Option PN 6
DIN2533



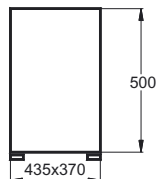
Foot: Single model



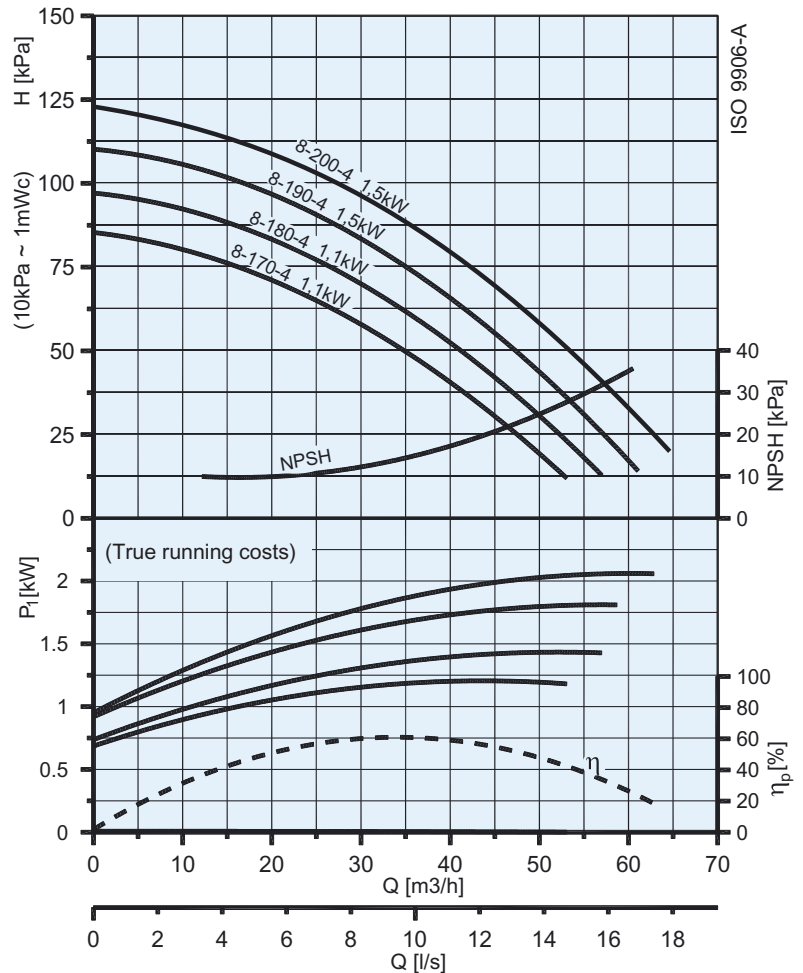
Foot: Twin model



Pedestal 76 kg.
(incl. concrete)



Pedestal 200 kg.
(incl. concrete)



P_i :
True running costs
Optagen effekt
Leistungsaufname

$$P_3 = Q \times H = \eta_p \times P_2$$

$$P_2 = \eta_m \times P_1$$

Power(kW)		1,1	1,5
H	Single	340	370
	Twin	340	370

Type.	Kg		Motor P_2 (kW)	In (A) (50Hz) ■ standard			Cos ϕ	n(min ⁻¹)	dB(A)	η_m (%) ■ standard.		
	Single	Twin		1x230V	3x400/230V	3x690/400V				eff 1	eff 2	eff 3
Omega 8-170-4 (D)	53,5	90,0	1,1	-	2,7/4,7	-	0,82	1390	37	-	-	72
Omega 8-180-4 (D)	53,5	90,0	1,1	-	2,7/4,7	-	0,82	1390	37	-	-	72
Omega 8-190-4 (D)	53,5	90,0	1,5	-	3,5/6,1	-	0,82	1405	49	85	-	75
Omega 8-200-4 (D)	53,5	90,0	1,5	-	3,5/6,1	-	0,82	1405	49	85	-	75

D = Twin pump

IEC 38 +/- 10%, 50 Hz, IP 55

This model is also available as an Omega-Drive - a selfregulating pump with integral inverter and optional differential pressure transducer. Denne model fåes også som Omega-Drive - en selvregulerende pumpe med integreret frekvensomformer med eller uden monteret differensstryk-transmitter. Dieses Model ist auch als Omega-Drive lieferbar - eine selbstregulierende Pumpe mit integriertem Umrichter, mit montiertem oder ohne Differenzdruckschalter.

Smedegaard reserve the right to change the product without prior notice and take no responsibility for inaccuracies or misprints.